



The mini display on SoundEar®4 - 400 and 410 is operated manually via the touch panel on the front of the cabinet.

Advanced Noise Monitoring for Improved Hospital Sound Environments

The SoundEar®4-400 is designed to help hospital staff visualize noise levels, creating a foundation for a quieter and more comfortable environment for both patients and healthcare workers. By making noise visible, the SoundEar®4-400 empowers staff to take immediate action when sound levels exceed recommended thresholds, improving overall well-being in critical care settings.

With the SoundEar®4-400, you can:

- Monitor and visualize noise levels in real-time, helping to maintain a calm and quiet environment
- Receive email alerts when noise levels surpass acceptable limits, ensuring timely interventions
- Automatically receive noise reports for analysis and compliance with health standards

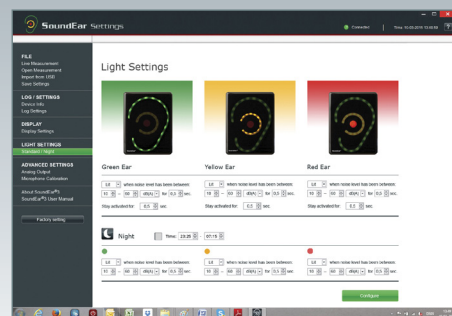
The SoundEar®4-400 is a dedicated network model, which differentiates it from the SoundEar®3, as it does not operate in stand-alone mode. This means it is tailored for seamless integration across hospital networks, making it ideal for monitoring multiple locations efficiently. While all other functions remain the same as the SoundEar®3, the integrated WiFi eliminates the need for additional equipment, making installation and management easier.



USB key for export of data.



External microphone.



SoundEar®4 software

Technical data SoundEar 4-400

STANDARDS: IEC61672-1-2002, ANSI S1.43 -1997
Type 260601-1: Medical electrical equipment - Part 1: general requirements for basic safety and essential performance. 606010-1-2: Medical equipment - Part 1-2: General requirement for basic safety and essential performance. Dampness and dust: IP 42. Compliance with Class 1

PARAMETERS:

Measures 3 measurements simultaneously LAF; LAS; LCpeak;
Laeq 1s, Laeq ¼ h, Laeq 1 h.
Resolution: 0,1 dB for all parameters
Measuring Ranges: RMS: Total 30 - 120 dB
Deviation: +/- 0,5 dB
Frequency Range: 20Hz - 20 kHz
Frequency Weightings: A- weighting (RMS), C-weighting (Peak)
Time Weighting: Slow (1S) & Fast (125 ms)
Dynamic Range: 90 dB and peak detection
Internal memory: 4 MB (ca. 60 days log time)
Real Time Clock: Hi-precision type with battery backup (CR2032)
Microphone: 20 Hz- 20 kHz

WiFi: 802.11 b/g/n
On-board PCB WiFi antenna

MECHANICAL FEATURES:

Cabinet: Shockproof acrylic
1 x USB: USB-C (power & PC for Log and configuration)
Measurement: Length 256 mm, Width: 205 mm, Height: 45 mm
Weight: 1,5 kg

ELECTRICAL FEATURES:

Power Supply: 5VDC (USB-C)
Current Consumption: max 2,5 W

TEMPERATURE:

During operation: 0 °C to 50 °C
When stored/during transport: -20 °C to 60 °C

MINI DISPLAY SETTING: LAeq 1 s., Alarm level, Clock and mini display off