

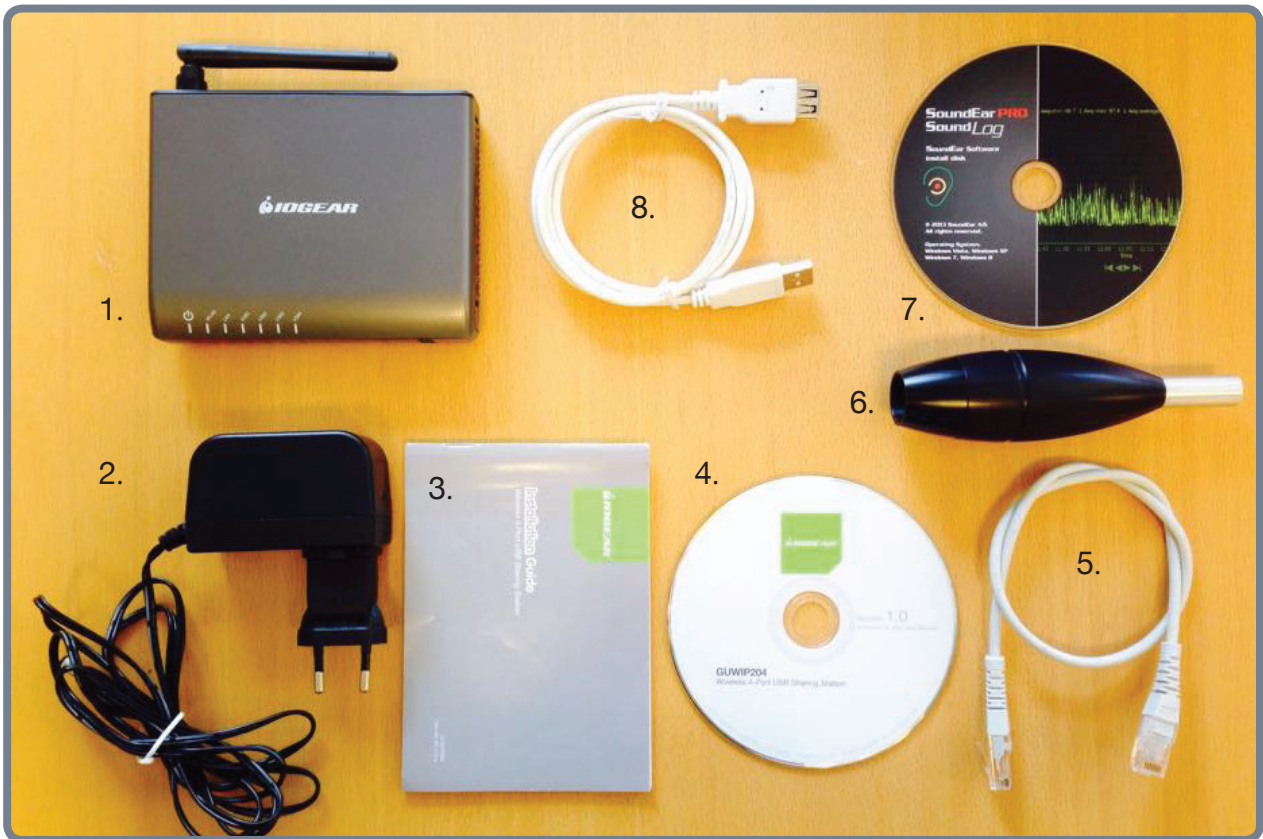
# SoundEar**PRO**

WIRELESS

---

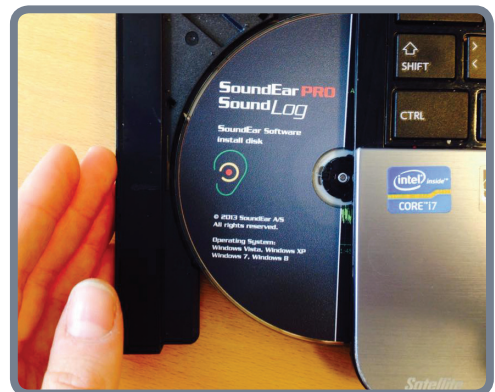
## Installation Guide

**1** Here is what you will need:



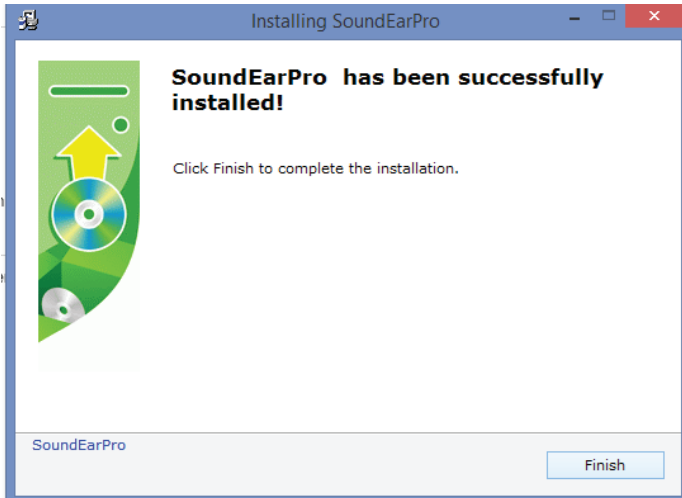
- 1) IOGEAR Wireless 4-port Sharing Station
- 2) Power adaptor
- 3) IOGEAR Installation Guide
- 4) IOGEAR Installation disc
- 5) Ethernet cable
- 6) SoundEarPRO Wireless Sampler
- 7) SoundEarPRO Software Install disc
- 8) USB cable

**2** Connect your computer to the internet.

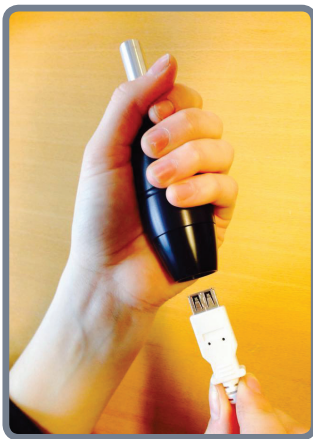


**3** Insert the SoundEarPRO Software install disc in your PC.

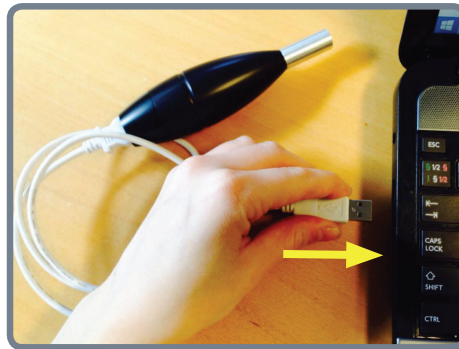
- 4 Once the software disc is inserted, the installation will start automatically. Follow the instructions and complete the installation.



- 5 Restart your computer.
- 6 Create a desktop shortcut to the SoundEarPRO software. Find the C-drive and click on the SoundEar icon to create the shortcut.



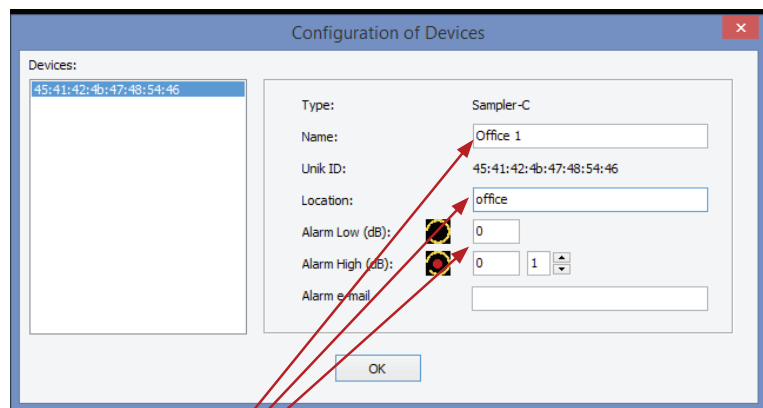
- 7 Take the USB cable and connect the SoundEar Sampler to your PC.



**PLEASE NOTE:** The sampler must be connected to your PC before opening the software for the first time.

- 8 Once the sampler is connected to your PC, you are ready to open the software. First thing you need to do is register and name the sampler.

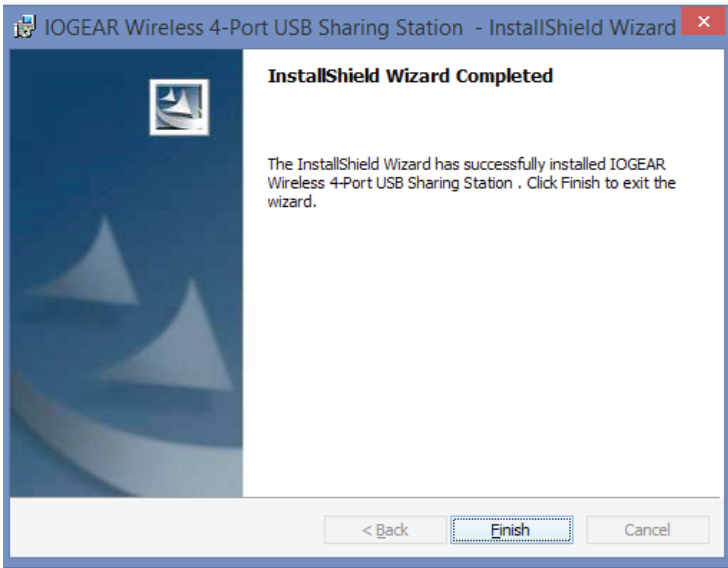
**PLEASE NOTE:** It may take a moment for the software to detect the sampler. If the pop-up box doesn't show up automatically, try to restart the software programme.



Set noise levels, name and choose location for the sampler in the pop-up box. If you have more than one sampler, simply repeat the procedure for each device.

## Wireless function installation

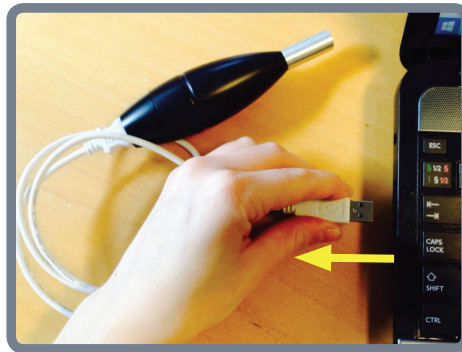
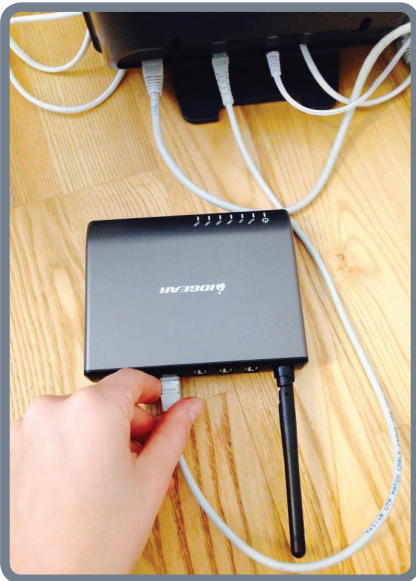
9 Insert the IOGEAR software CD in your PC.



10 Follow the instructions and complete the installation.

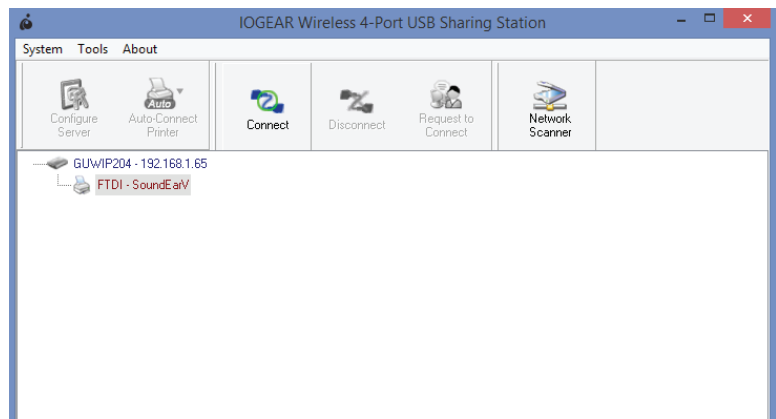
11 Restart your PC.

12 Follow the instructions in the IOGEAR installation guide onnect the IOGEAR Sharing Station to your router

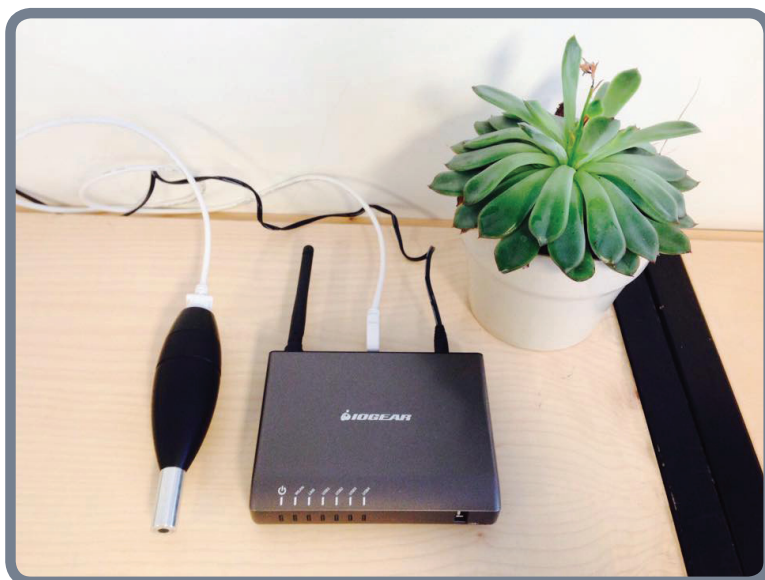


13 Disconnect the sampler from your PC and connect to the IOGEAR Sharing Station via the USB-cable.

14 Open the IOGEAR software and follow the instructions to configure the sampler. Finally, click "Connect".



- 15 When connected, disconnect the IOGEAR Sharing Station and SoundEar sampler from your router and place at the desired location.



- 15 Open the SoundEarPRO Software and start reading the data from the sampler.

