



# SoundEar®3

Mål, overvåg og håndtér støjen med SE3-300

## SoundEar®3 - 310 Specifications

<b>Parameters:</b>	Measures 3 measurements simultaneously LAF; LAS; LCpeak; Laeq 1s, Laeq 1/4 h, Laeq 1/2h, Laeq 1 h.
<b>Resolution:</b>	0,1 dB for all parameters
<b>Measuring Ranges:</b>	RMS: Total 30 - 120 dB
<b>Deviation:</b>	+/- 0,5 dB
<b>Frequency Range:</b>	20Hz- 20 kHz
<b>Frequency Weightings:</b>	A- weighting ( RMS), C-weighting ( Peak )
<b>Time Weighting:</b>	Slow(1S) & Fast ( 125 ms )
<b>Dynamic Range:</b>	90 dB and peak detection
<b>Light setting:</b>	full configurability through Soundear software including nightsetting.
<b>2 x outputs :</b>	0-10 V or 4-20 mA
<b>2 xUSB outputs:</b>	Micro USB ( power & PC ) , USB OTG ( Log, configuration)
<b>Display setting:</b>	LAS max, Leq (A)15, Alarm settings, Temperature & Clock
<b>Power Supply:</b>	5VDC ( Micro USB) / 24VDC ( Screw terminal )
<b>Current Consumption:</b>	max 2,5 W
<b>Internal memory:</b>	16 MB( 128 Mbit ) ( 5-90 days log time, depending on log settings )

<b>Real Time Clock:</b>	Hi-precision type with battery backup ( CR2032 )
<b>Microphone:</b>	20 Hz- 20 kHz
<b>Measurement 300 - 310:</b>	Length 256 mm, Width: 205 mm, Height: 45 mm, Weight: 1,5 kg
<b>Standards:</b>	IEC61672-2-2002, Type 2, ANSI 51,4 Type 260601-1: Medical electrical equipment- Part 1: general requirements for basic safety and essential performance. 60601-1-2_ Medical equipment - Part 1.2: General requirement - Part 1-2: General requirement for Basic safety and essential performance.
<b>Connectivity accessories:</b>	GSM module, 4 G module for Cloud solution



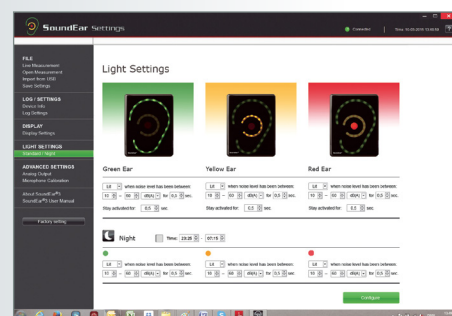
Displayet på SoundEar®3 - 300 og 310 kan betjenes manuel via tuch-panelet foran på kabinettet.



Ekstern mikrofon



USB nøgle til aflæsning af data



SoundEar®3 software

SoundEar A/S  
www.soundear.dk

