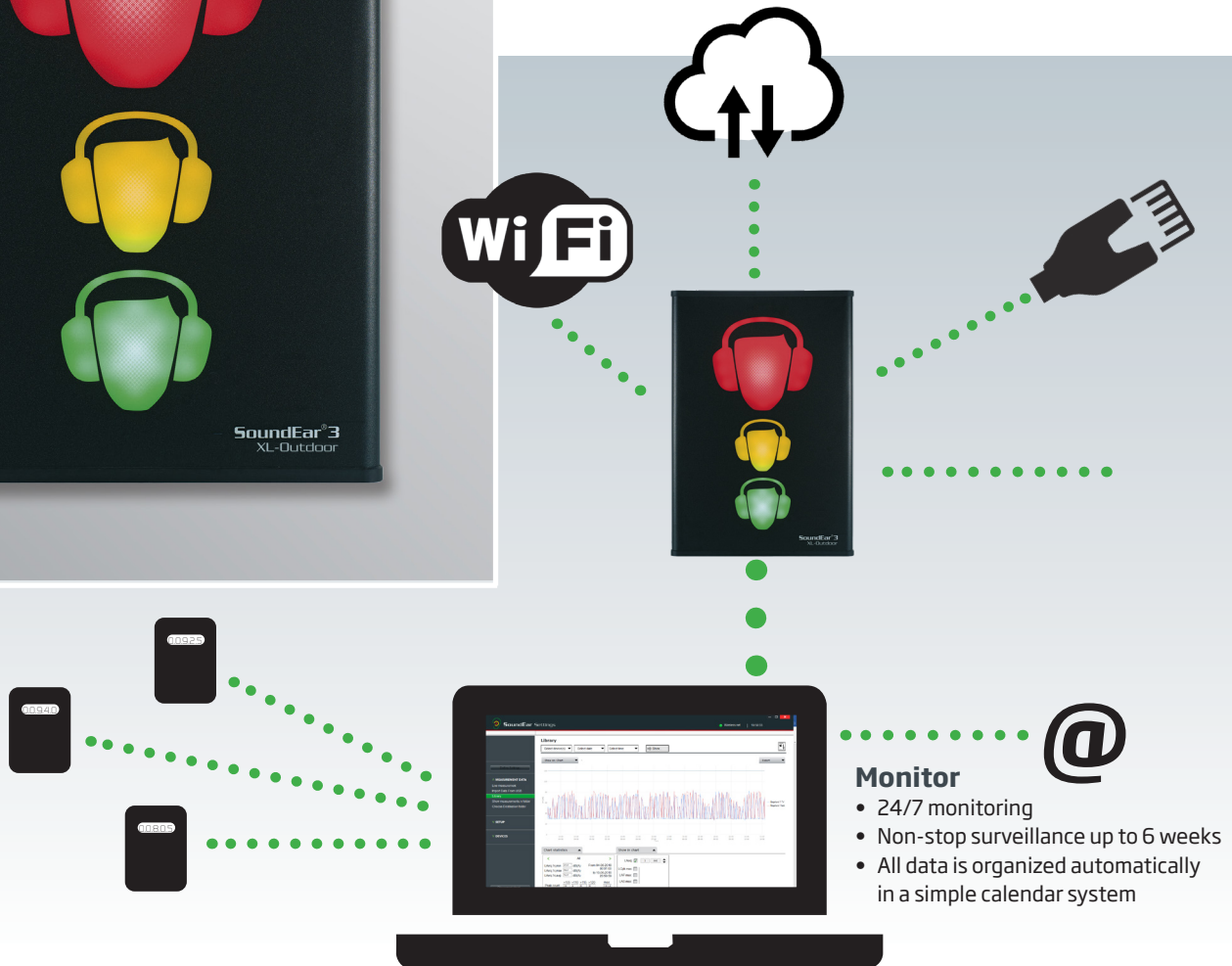


SoundEar®3 XL-Outdoor



SoundEar®3 XL-Outdoor

- measure, monitor and manage noise in multiple locations



Monitor

- 24/7 monitoring
- Non-stop surveillance up to 6 weeks
- All data is organized automatically in a simple calendar system

Technical data SoundEar®3 XL-Outdoor

Parameters:	Measures 3 measurements simultaneously LAF; LAS; LCpeak; Laeq, 1s, Laeq ¼ h, Laeq 1/2h, Laeq 1 h.
Resolution:	0,1 dB for all parameters
Measuring Ranges:	RMS: Total 30 - 120 dB
Deviation:	+/- 0,5 dB
Frequency Range:	20Hz- 20 kHz
Frequency Weightings:	A- weighting (RMS), C-weighting (Peak)
Time Weighting:	Slow(1S) & Fast (125 ms)
Dynamic Range:	90 dB and peak detection
Light setting:	full configurability through Soundear software including nightsetting.
2 x outputs :	0-10 V or 4-20 mA
2 xUSB outputs:	Micro USB (power & PC) , USB OTG (Log, configuration)
Display setting:	LAS max, Leq (A)15, Alarm settings, Temperature & Clock

Power Supply:	5VDC (Micro USB) / 24VDC (Screw terminal)
Current Consumption:	max 2,5 W
Internal memory:	16 MB(128 Mbit)
Real Time Clock:	Hi-precision type with battery backup (CR2032)
Microphone:	20 Hz- 20 kHz
Measurement:	Length 600 mm, Width: 400 mm, Height: 50 mm,
Weight:	4kg
Waterproof:	IP54
Connectivity:	WiFi/Lan, GSM, Modbw TCP, MQTT

Standards:
IEC61672-2-2002, Type 2, ANSI 51,4 Type 260601-1: Medical electrical equipment- Part 1: general requirements for basic safety and essential performance. 60601-1-2_ Medical equipment - Part 1.2: General requirement - Part 1-2: General requirement for Basic safety and essential performance. Connectivity accessories: GSM module, 4 G module for Cloud solution